



fire resistant shutters

Specification

Designed for use in areas where protection from the spread of fire is required. The shutter has been tested to BS476 Part 22. Providing upto 240 minutes of protection.

Curtain

Shutter curtains are constructed from continuous interlocking galvanised steel laths (perforated lath available), securely held in place by end locks. Bottom rails are generally galvanised and roll-formed into a T-section.

Guides

Vertical guides are formed from rolled steel and supplied with fixing angles suitable for securing to the structure.

Endplates

Prime painted mild steel of appropriate thickness relative to door size and supplied with fixing angles suitable for securing to the structure.

Barrel

The barrel is constructed from seamless steel tube of adequate diameter to resist deflection and held in bearings or cups attached to the endplates.

Hood (Coil Casing)

All fire shutters as standard include a galvanised sheet steel hood (coil casing). A motor cover will be included on all shutters under 2500mm high and as an option over this height.

Finish

Generally galvanised with non-galvanised parts prime painted. Steel laths available in:

- Polyester powder coated in a range of BS/RAL colours to give a durable finish

Electrical Operation

Suitable for all sizes of shutters, the motor is either single phase (240 Volt 50 Hz) or 3 phase (415 Volt 50 Hz) with controlled descent dependent on size of door.

As standard each shutter will include an open/stop/close push button station mounted.

Options

- Self closing by means of a thermal fusible link activated at a temperature of 68°C and mounted to the underside of the hood
- 24v DC auto resetting solenoid release device connected to the fire alarm/smoke detector.
Solenoid automatically resets when the shutter is fully opened by pressing the 'up' button and when the alarm has been turned off.

The fire alarm circuit must provide the supply for the solenoid (0.5 amps) with an initial supply of 3.5 amps for 20 - 30 m/seconds to release the shutter but only when in the alarm condition. (If the fire alarm circuit is unable to provide a 24v DC supply for the solenoid or ancillaries a battery back-up system can be provided at extra cost).

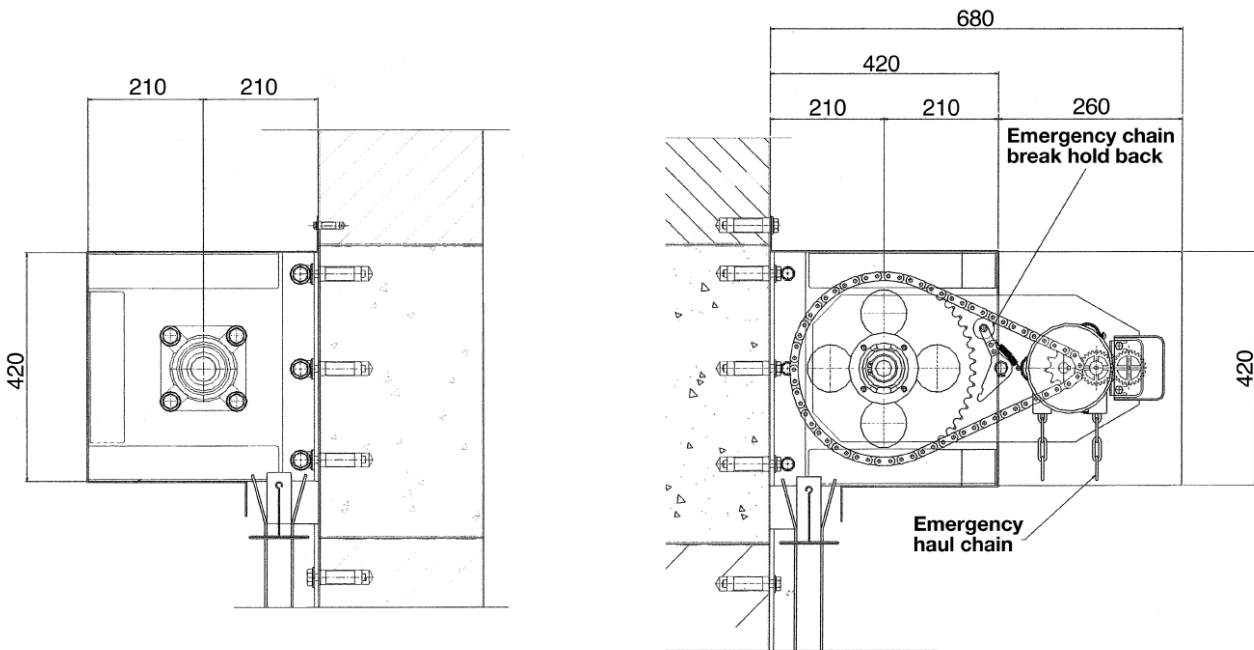
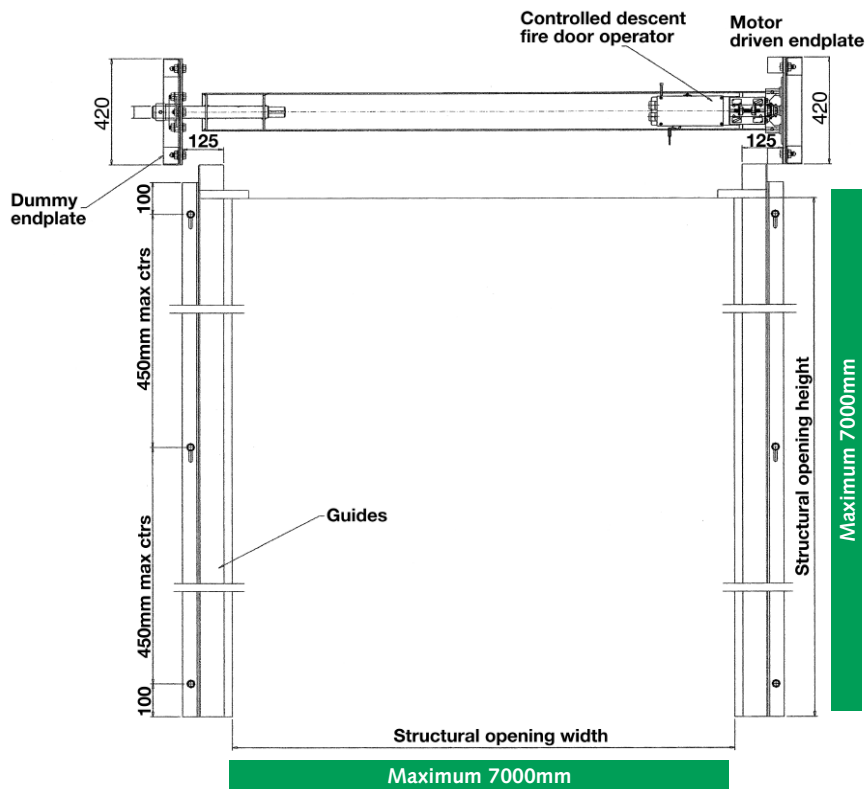
- Note! To comply with current legislation, fire shutters cannot be linked to fire alarm systems if they are over fire exits or cover a fire exit route. They can only be fitted with a device which will close the shutter by a local heat source i.e. fusible link.

Maintenance

All our products are manufactured to a very high specification. However, planned maintenance can ensure trouble free operation.

Our Service Department can advise on a suitable maintenance agreement.

fire resistant shutters



For any other size requirements, please contact our technical department.

E: sales@doorfix.ie
www.doorfix.ie
www.doorfix.co.uk

